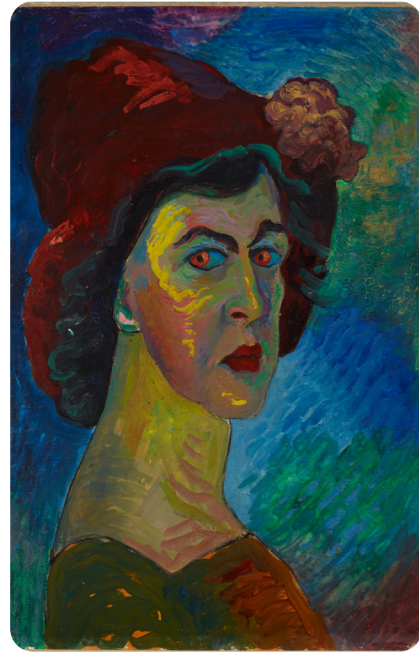
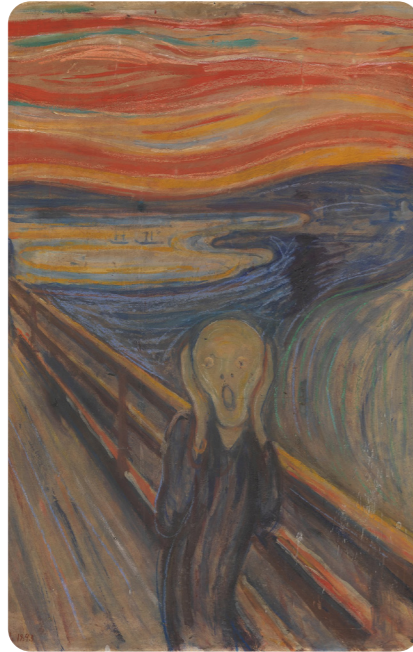


# Expression

Expressionism was a significant art movement that began in Germany around 1905. Artists, called Expressionists, sought to express the mood, feelings and emotions of themselves or their subjects in their artwork rather than showing people, events or objects realistically.



*Self-portrait I*  
by Marianne von Werefkin, 1910



*The Scream*  
by Edvard Munch, 1893

## Edvard Munch

Edvard Munch was an Expressionist painter. He was Norwegian. He was born in 1863 and he died in 1944. Many artists regard him as the Father of Expressionism. He produced many paintings in his lifetime, but *The Scream* has become an iconic image in the art world.



*Self-portrait with Brushes*  
by Edvard Munch, 1904

## Expressionist colour

In Expressionist art, the use of colour is highly intense. This means Expressionist artists typically use bright or strong colours in their artwork. They use these intense colours to express their own or their subjects' extreme emotions and feelings or the mood of the scene.

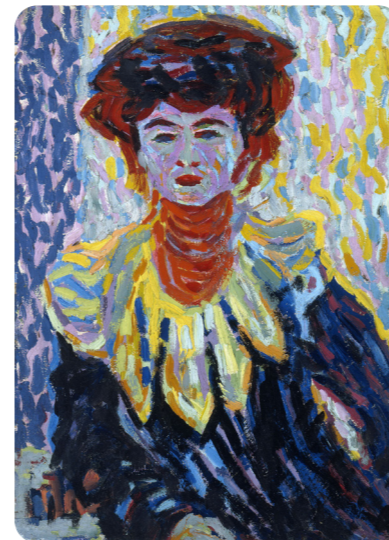
Edvard Munch has used strong, dark shades of green, black and orange in this painting to express the scene's mood. These shades are used to show a foreboding atmosphere.

Expressionist artists also use non-naturalistic colours in their artwork to express extreme emotions or the scene's mood. This means they use colours that are not realistic or closely matched to real life. The Expressionist artist Ernst Ludwig Kirchner has used non-naturalistic colours in the portrait painting shown here.

Expressionist artists apply colour generously using free brushstrokes, as seen in Walter Gramatté's portrait. This means they create texture and use brushstrokes on the canvas that they have not planned but done spontaneously for effect.



*The Sick Child*  
by Edvard Munch, 1896



*Doris with Ruff Collar*  
by Ernst Ludwig Kirchner, c1906



*Portrait Rosa Schapire*  
by Walter Gramatté, 1920

## Modern Expressionism

Today, many portrait artists are inspired by the work of Expressionist painters from the early 20th century, including artists who create photographic portraits. Photography is a suitable method for creating Expressionist art as photographers can show the mood and feelings of a subject or a scene's mood in a photograph through facial expression and by using effects.



Photography and text are combined here, to create a piece of modern Expressionist art. Adding text to an image is called overlay text. Overlay text can help to express the intention of the artwork.



## Glossary

- art movement** When a group of artists with the same aim develop and use a specific style of art for a period of time.
- Expressionist** An artist who practises Expressionism in their work to express mood, extreme feelings and emotions.
- iconic** A famous person or thing that people admire.

