

Plant Parts

Types of plants

Plants are living things. There are garden plants and wild plants.



garden plants



wild plants

Wild plants live in different places, like meadows, woodlands, hedgerows and roadsides.



meadow



woodland



hedgerow



roadside

Seasonal changes

Plants change with the seasons. In winter, many plants die or become dormant. In spring, buds open to become leaves or flowers and new plants grow from seeds and bulbs.



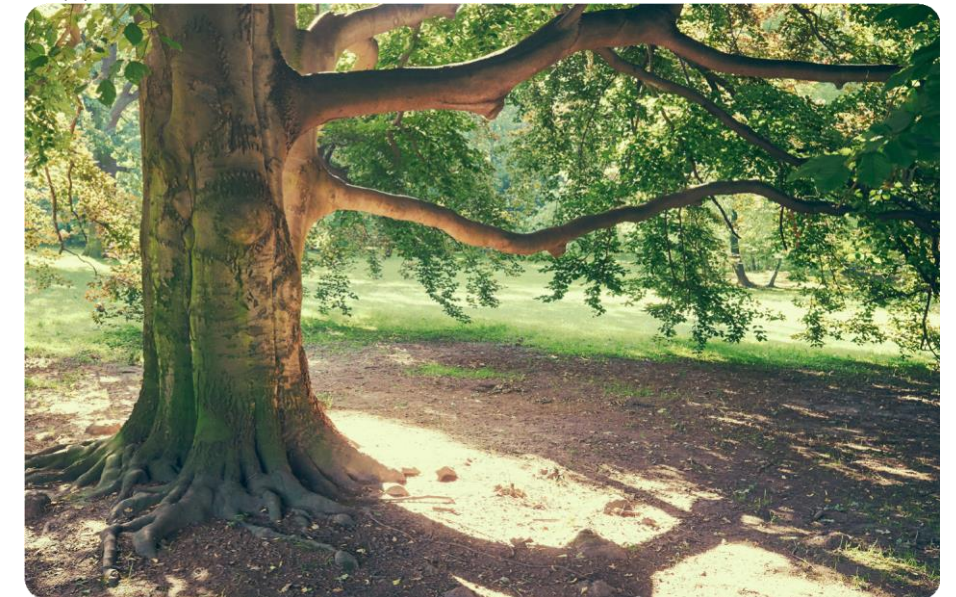
winter



spring

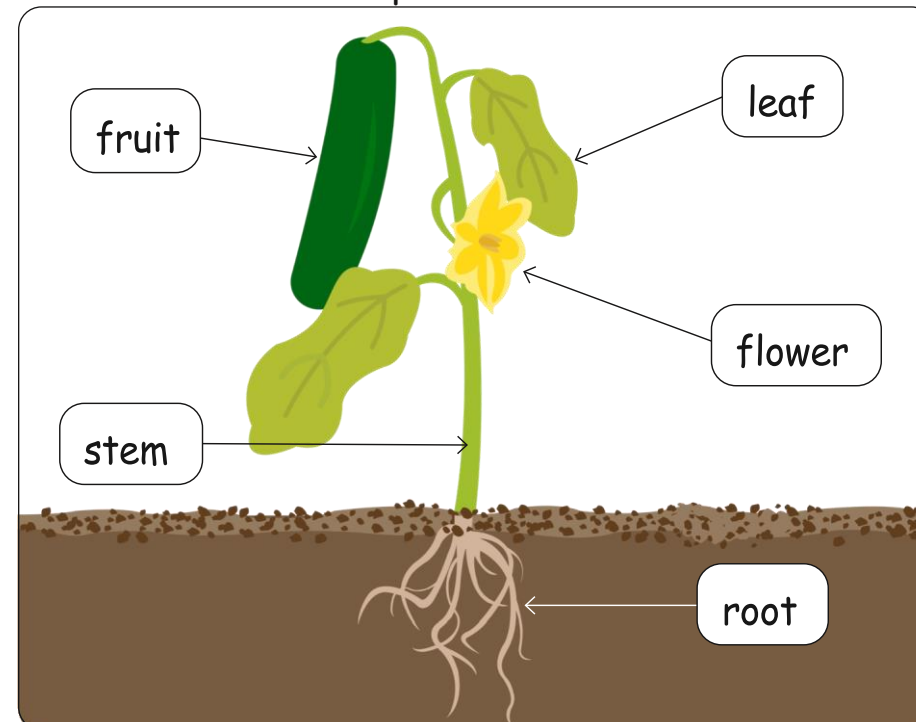
Trees

Trees are plants. A tree has a woody stem called a trunk, which is covered with bark. The trunk supports the branches of the tree.



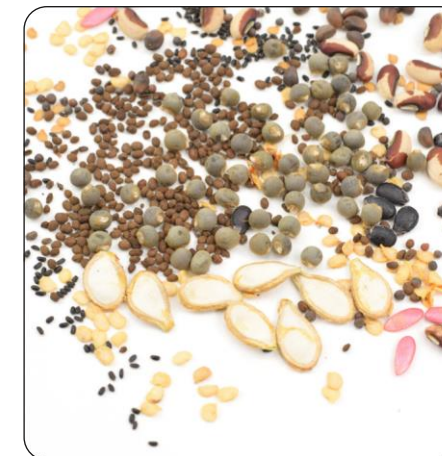
Plant parts

Plants have five main parts.



Seeds and bulbs

Plants grow from seeds or bulbs. Inside seeds and bulbs are tiny plants waiting for the right conditions to start growing. Seeds are usually small and come in different shapes and sizes. Bulbs are bigger than seeds and have a rounded shape and papery coating.



seeds

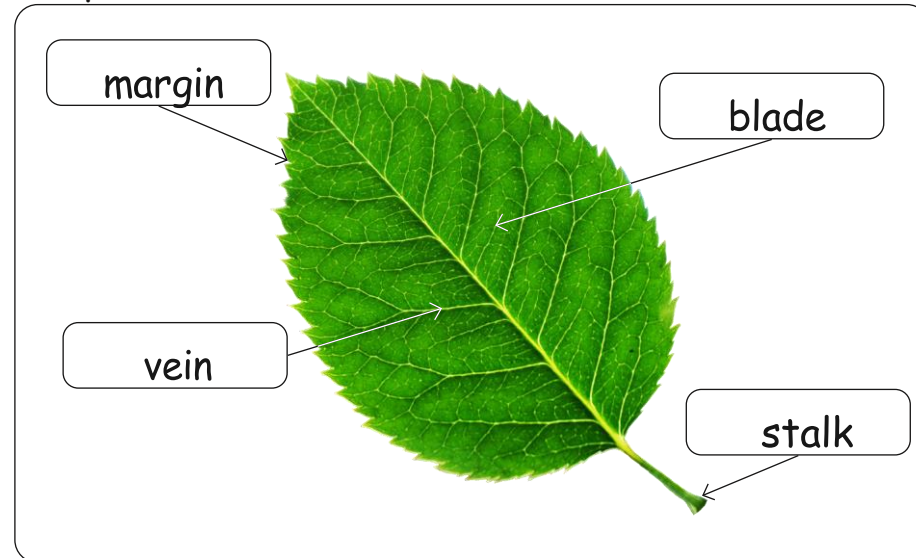


bulbs



Leaf parts

There are four main parts of a leaf. The blade is a leaf's large flat surface with thin lines called veins going across it. The margin is the leaf's edge and the stalk joins the leaf to the stem of the plant.



Types of leaf

There are five types of leaf.



simple



palmate



compound



lobed



needle-like

Importance of plants

Plants are important for many reasons.

Shelter

Many animals live on plants or use them to build their nests. The plant protects them from the weather and other dangers.



Food

Animals, including humans, eat plants. Some animals only eat plants. They are known as herbivores.



Materials

Many everyday materials are made from plants, such as paper, wood and natural fabrics.



Glossary

leaf	One of the flat parts of a plant or tree that grows from the stem or branch. They are often green in colour.
stem	The main part of a plant that grows up from the ground and supports the branches, leaves, flowers, or fruits that may grow from it.
flower	The blossom of a plant. These can be lots of different sizes, shapes and colours.
root	The roots hold the plant in the ground and take food and water to other parts of the plant.
fruit	The part of a plant that has seeds and flesh, such as an apple or strawberry. These can often be eaten by humans or animals.
bark	The tough, woody outer covering of a tree's trunk and branches.
trunk	The stem of a tree is called the trunk.